

Photoshop Worksheet #3

Hands-On Practice

Due Date: _____

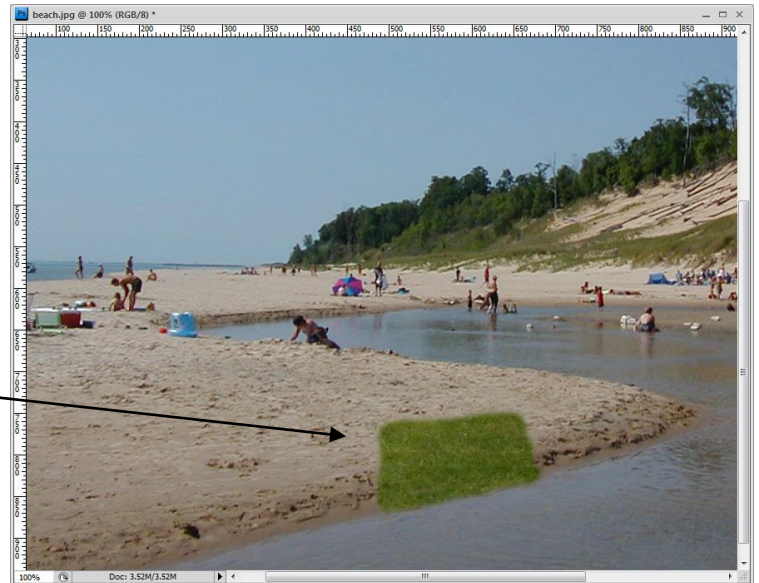
Activity 1 – Cloning Image Elements

1. Use Photoshop to open *park.jpg* found in the photoshop file folder on your data disk.
2. Show Photoshop's Layers, Options and Tools windows.
3. Display the Ruler and use pixels as the unit of measurement.
4. Clone an area of the grass on *park.jpg* that is 900 pixels from the left and 900 pixels from the top of the image.
5. Open *beach.jpg* found in the photoshop file folder on your data disk.
6. With the Cloning tool active, make sure the following setting are used in the Options window:

- Brush: 19 pixel diameter
- Mode: Normal
- Opacity: 100%

Hint: Zoom in before you start cloning.

7. Clone an area using the starting at 500 pixels in from the left and running along the waterline from 850 pixels from the left to approximately 810 pixels. Fill in the grass up to 750 pixels from the top as shown at the right.
8. Reduce beach.jpg's image size to 6 inches wide and a resolution of 125 pixels/inch.
9. Save image as *wk3-beach.jpg* using the highest resolution possible.
10. Use the Window menu to make the window with *park.jpg* the active window.
11. Close *park.jpg* window.



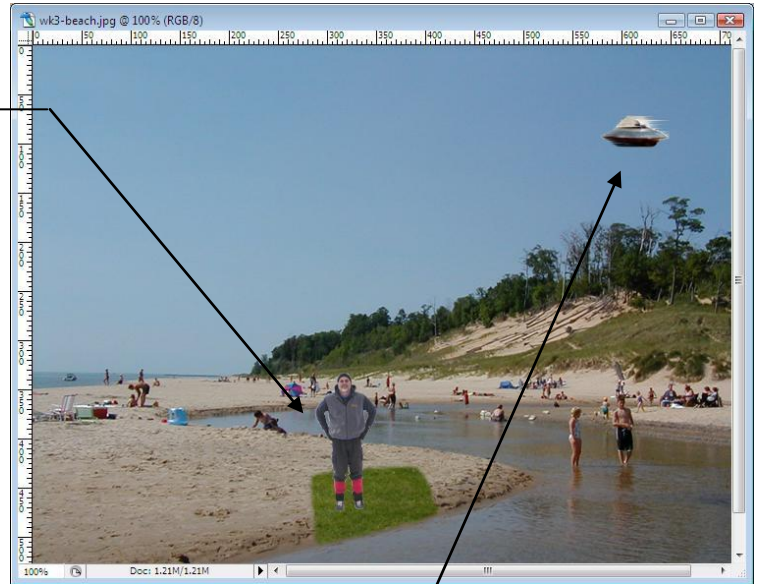
Activity 2 – Copying Image Elements Using Magic Wand

1. Open *dr-t.jpg* found in the photoshop file folder on your data disk.
2. Rotate canvas counter clockwise.
3. Zoom in or out until the complete image is displayed on the screen.
4. Adjust the image input levels to 1.34.
5. Use the Magnetic Lasso tool to outline Dr. T within the image. Don't forget you can undo any mistakes using the Delete.
6. Copy the outline from the image and paste it into a new untitled image window using the Transparent background contents option.
7. Using the Background Eraser tool to erase any undesired colors that were copied with the outline. For example, the area outlined by the arms. The Eyedropper tool and Brush tool can be used to add colors that did not transfer with the copy.
8. Change the image size of the outline of Dr. T. to 0.5 inches wide and a resolution of 125 pixels/inch.
9. Save new image in a transparent .png file format. Add a hyphen and your last name after dr-t and before the .png in the filename, i.e., I would save this file as *dr-t-trainor.png*.



Activity 3 – Flattening Images and More Filters

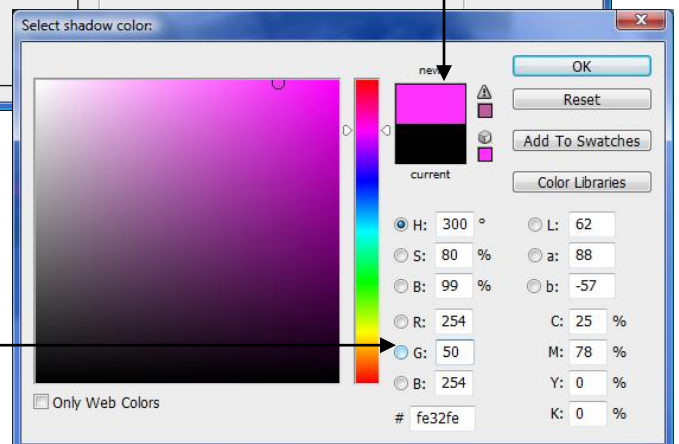
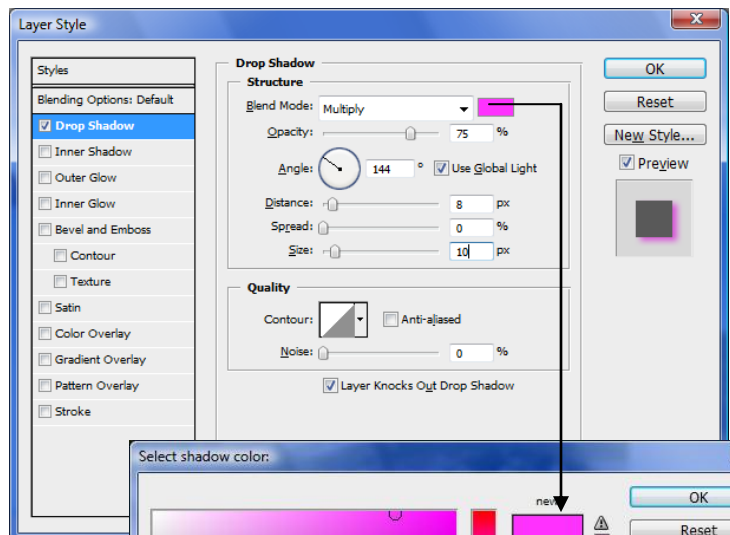
1. Use Select menu's All option to select contents of image window with Dr. T.
2. Copy outline of Dr. T. and paste it on to the beach.
3. Use the Move tool to position the Dr. T. on the grass as shown at the right.
4. Flatten all the layers into one on *beach.jpg*.
5. Save the beach with Dr. T.
6. Close *dr-t.jpg*, and any untitled image windows. Only *wk3-beach.jpg* should be currently open.
7. Open *ufo.png* found in the photoshop file folder on your data disk.
8. Use the Filer menu's Stylize option on the ufo with Wind set to the following:
 - Method: Wind
 - Direction: From Left
9. Select ufo, copy it, then paste it onto the beach sky and move it to the top right corner of the image as shown above.



Activity 4 – Drop Shadows, Bevel and Emboss

1. Add your name to the top left corner of the image using black Arial font 30 points in size. Anti-aliasing should be turned to smooth.
2. Drop shadow the text using the following settings:

- Color – Red (254), Green (50) and Blue (254)
- Opacity: 75%
- Angle: 144
- Use Global Light: active checkbox
- Distance: 8
- Spread: 0
- Size: 10



3. Bevel and emboss the text using the following settings:

- Style: Inner Bevel
- Technique: Smooth
- Depth: 200%
- Direction: Up
- Size: 7
- Soften: 2
- Angle: 144

4. Use the Move tool to position the text as desired.

5. Save the beach image in the photoshop folder using a .jpg file format and ***wk3-yourname*** as the filename, i.e., I would save this file as wk3-trainor.gif.

6. Print the image.

7. Close all open image windows.

8. Close Photoshop.

